

H1 GH-34/DMSO
MMJABAL

2



7.922
7.428
7.414
7.240
7.226
7.194
7.099
7.087

3.324
3.086
2.501
2.246

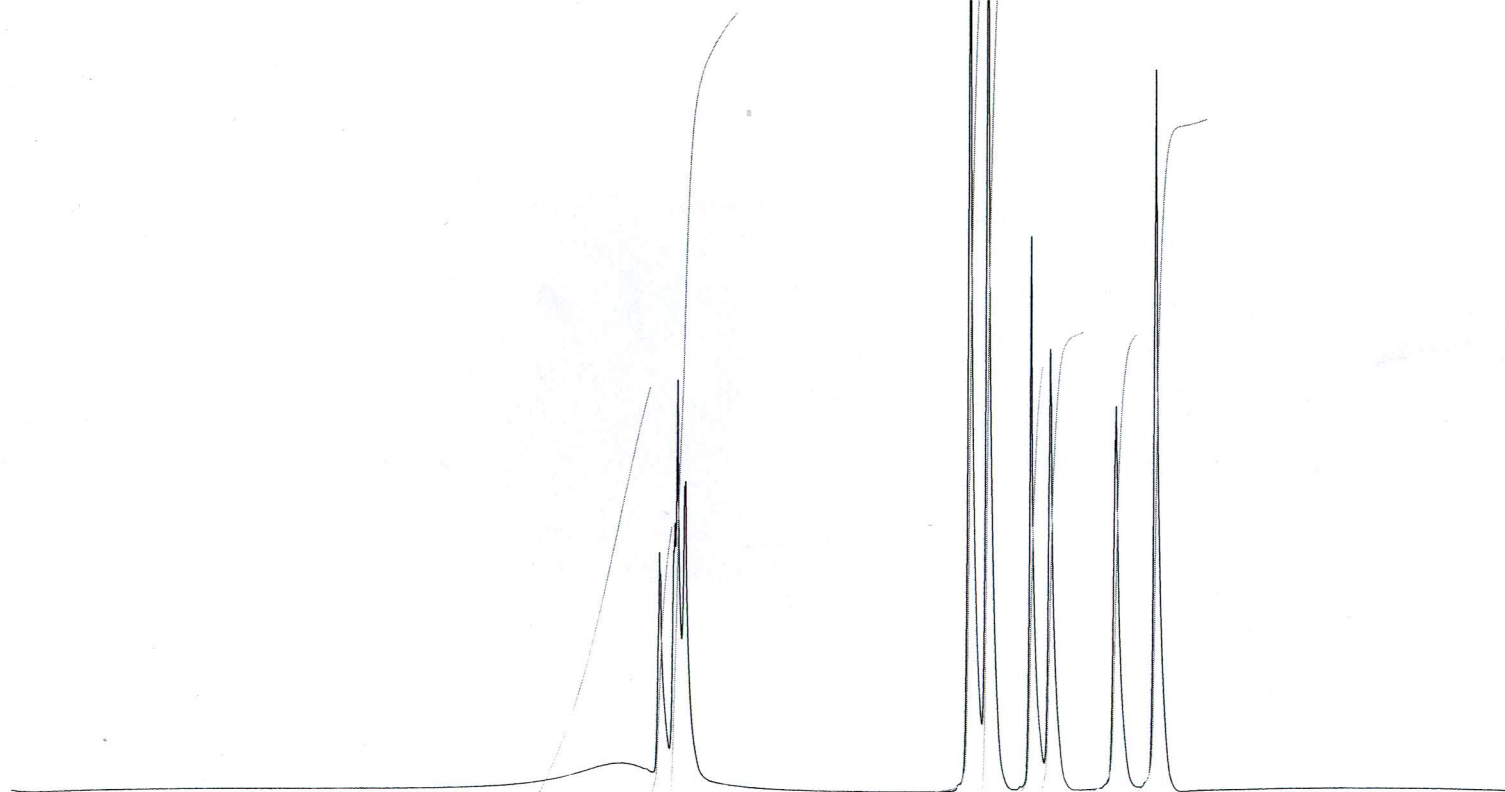
1.367
0.841

Current Data Parameters H1 GH-34/DMSO
NAME dremam-GH-34 MMJABAL
EXPNO 1
PROCNO 1

F2 - Acquisition Parameters
Date_ 20090616
Time 10.52
INSTRUM av500
PROBHD 5 mm BBO BB-1H
PULPROG zg30
TD 65536
SOLVENT DMSO
NS 16
DS 0
SWH 10000.000 Hz
FIDRES 0.152588 Hz
AQ 3.2769001 sec
RG 90.5
DW 50.000 usec
DE 6.00 usec
TE 300.0 K
D1 1.00000000 sec

===== CHANNEL f1 =====
NUC1 1H
P1 10.40 usec
PL1 -3.00 dB
SF01 500.1330008 MHz

F2 - Processing parameters
SI 32768
SF 500.1300000 MHz
WDW EM
SSB 0
LB 0.30 Hz
GB 0
PC 1.00

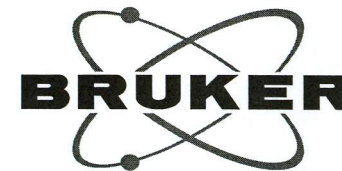


0.90
0.59
1.72

1.92
1.95
0.94
1.01
1.01
1.49

15 14 13 12 11 10 9 8 7 6 5 4 3 2 1 0 -1 -2 ppm

H1 GH-34/DMSO
MMJABAL



Current Data Parameters H1 GH-34/DMSO
NAME dremam-GH-34 MMJABAL
EXPNO 1
PROCNO 1

F2 - Acquisition Parameters

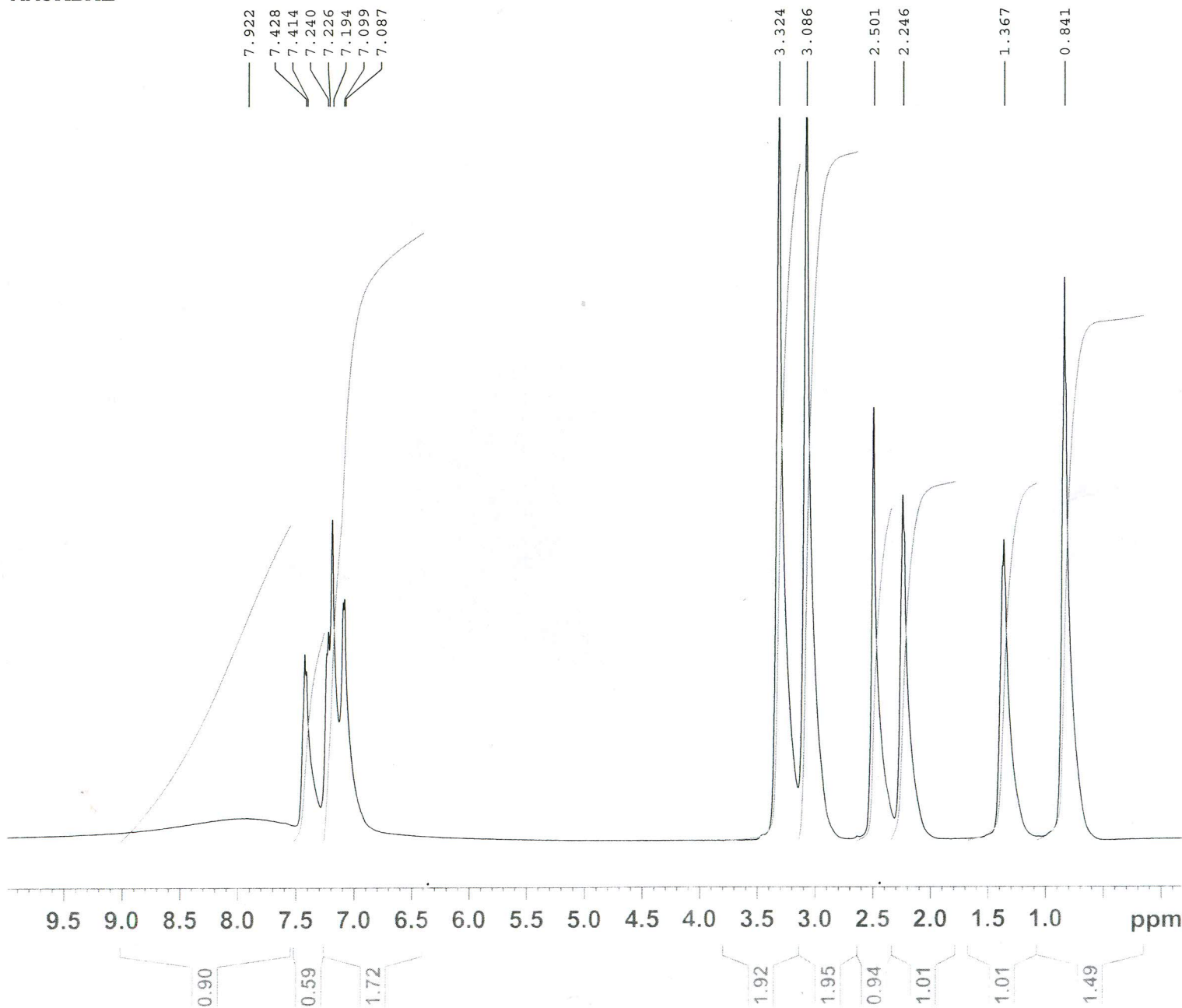
Date_ 20090616
Time 10.52
INSTRUM av500
PROBHD 5 mm BBO BB-1H
PULPROG zg30
TD 65536
SOLVENT DMSO
NS 16
DS 0
SWH 10000.000 Hz
FIDRES 0.152588 Hz
AQ 3.2769001 sec
RG 90.5
DW 50.000 usec
DE 6.00 usec
TE 300.0 K
D1 1.00000000 sec

===== CHANNEL f1 =====

NUC1 1H
P1 10.40 usec
PL1 -3.00 dB
SFO1 500.1330008 MHz

F2 - Processing parameters

SI 32768
SF 500.1300000 MHz
WDW EM
SSB 0
LB 0.30 Hz
GB 0
PC 1.00



C13 GH-34/DMSO
MMJABAL

164.70

154.14
151.49
150.77

130.47
125.93
123.74
119.43
115.50
111.70
107.16

47.19
44.25
40.52
40.36
40.19
40.02
39.86
39.69
39.53
27.99
21.90
14.14



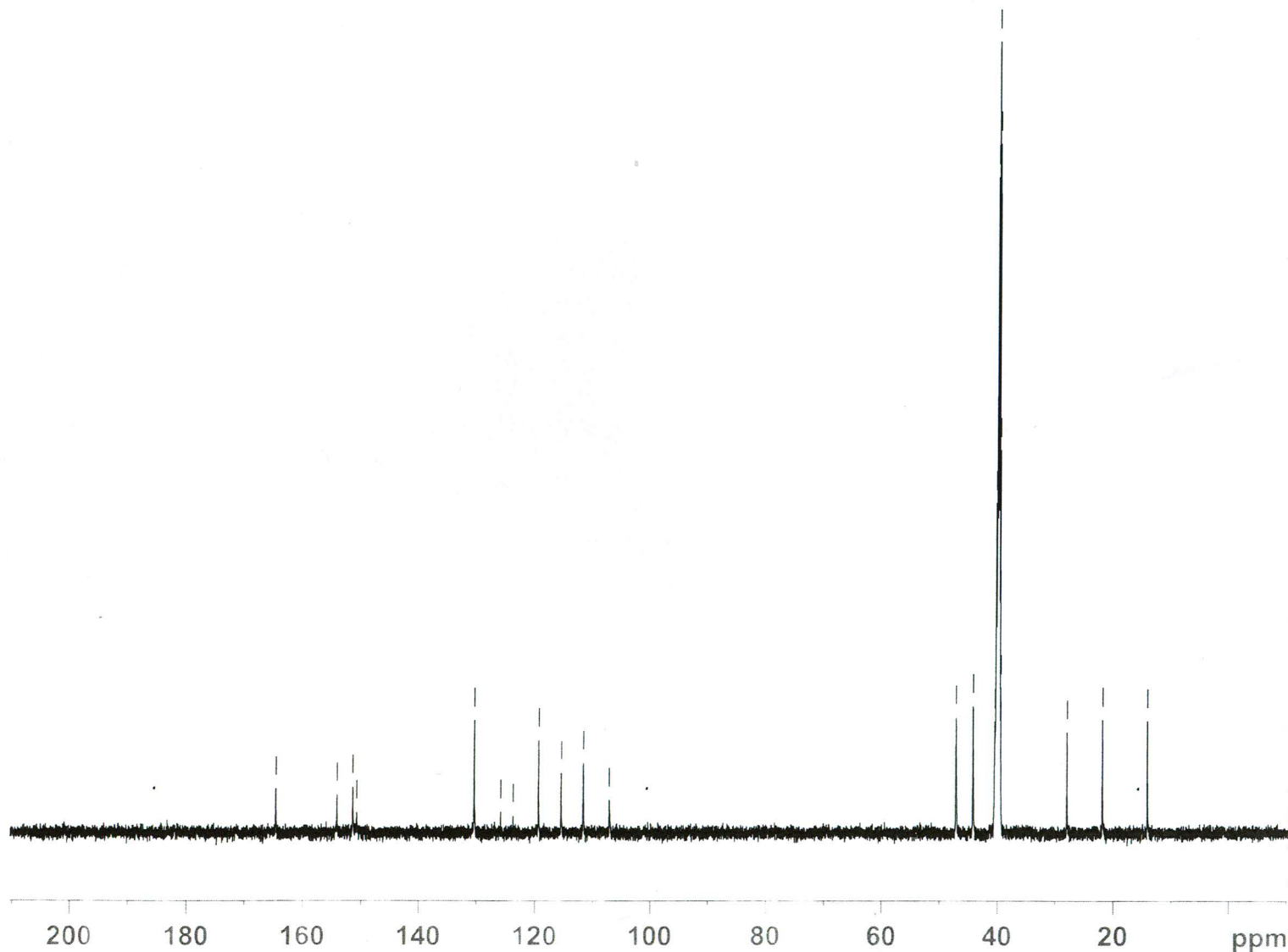
Current Data Parameters
NAME dremam-GH-34
EXPNO 2
PROCNO 1

F2 - Acquisition Parameters
Date_ 20090616
Time 10.56
INSTRUM av500
PROBHD 5 mm BBO BB-1H
PULPROG zgpg30
TD 65536
SOLVENT DMSO
NS 295
DS 4
SWH 27777.777 Hz
FIDRES 0.423855 Hz
AQ 1.1797160 sec
RG 203.2
DW 18.000 usec
DE 6.00 usec
TE 300.0 K
D1 2.00000000 sec
d11 0.03000000 sec
d12 0.00002000 sec

===== CHANNEL f1 =====
NUC1 13C
P1 5.80 usec
PL1 -2.00 dB
SFO1 125.7703643 MHz

===== CHANNEL f2 =====
CPDPRG2 waltz16
NUC2 1H
PCPD2 80.00 usec
PL2 -3.00 dB
PL12 15.00 dB
PL13 15.00 dB
SFO2 500.1320005 MHz

F2 - Processing parameters
SI 32768
SF 125.7577890 MHz
WDW EM
SSB 0
LB 1.00 Hz
GB 0
PC 1.40



C13 GH-34/DMSO
MMABAL

164.80
154.14
151.49
150.77
130.47
125.93
123.74
119.43
115.50
111.70
107.16



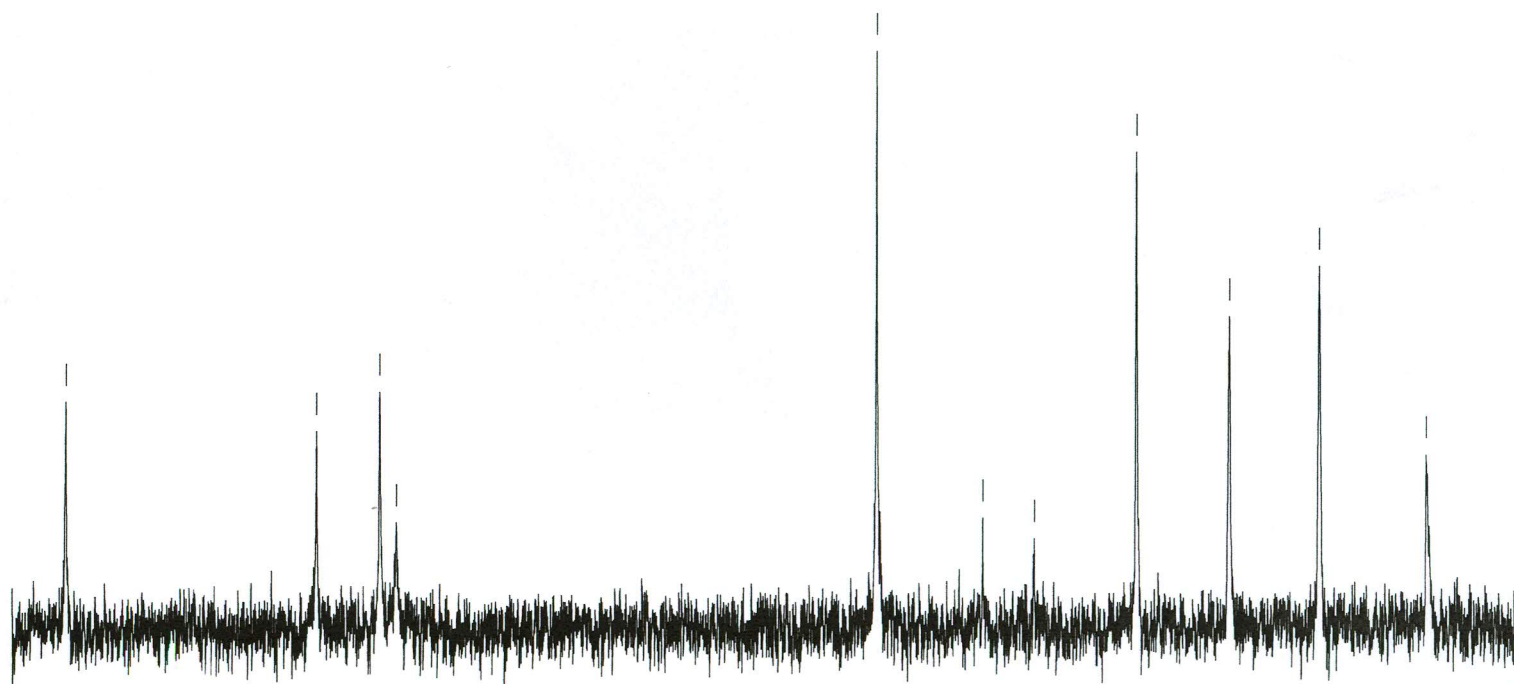
Current Data Parameters
NAME dremam-GH-34
EXPNO 2
PROCNO 1

F2 - Acquisition Parameters
Date_ 20090616
Time 10.56
INSTRUM av500
PROBHD 5 mm BBO BB-1H
PULPROG zgpg30
TD 65536
SOLVENT DMSO
NS 295
DS 4
SWH 27777.777 Hz
FIDRES 0.423855 Hz
AQ 1.1797160 sec
RG 203.2
DW 18.000 usec
DE 6.00 usec
TE 300.0 K
D1 2.00000000 sec
d11 0.03000000 sec
d12 0.00002000 sec

===== CHANNEL f1 =====
NUC1 13C
P1 5.80 usec
PL1 -2.00 dB
SFO1 125.7703643 MHz

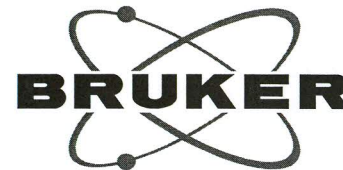
===== CHANNEL f2 =====
CPDPRG2 waltz16
NUC2 1H
PCPD2 80.00 usec
PL2 -3.00 dB
PL12 15.00 dB
PL13 15.00 dB
SFO2 500.1320005 MHz

F2 - Processing parameters
.SI 32768
SF 125.7577890 MHz
WDW EM
SSB 0
LB 1.00 Hz
GB 0
PC 1.40



165 160 155 150 145 140 135 130 125 120 115 110 ppm

C13 GH-34/DMSO
MMJABAL



Current Data Parameters
NAME dremam-GH-34
EXPNO 2
PROCNO 1

F2 - Acquisition Parameters
Date_ 20090616
Time_ 10.56
INSTRUM av500
PROBHD 5 mm BBO BB-1H
PULPROG zgpg30
TD 65536
SOLVENT DMSO
NS 295
DS 4
SWH 27777.777 Hz
FIDRES 0.423855 Hz
AQ 1.1797160 sec
RG 203.2
DW 18.000 usec
DE 6.00 usec
TE 300.0 K
D1 2.00000000 sec
d11 0.03000000 sec
d12 0.00002000 sec

===== CHANNEL f1 =====
NUC1 13C
P1 5.80 usec
PL1 -2.00 dB
SFO1 125.7703643 MHz

===== CHANNEL f2 =====
CPDPRG2 waltz16
NUC2 1H
PCPD2 80.00 usec
PL2 -3.00 dB
PL12 15.00 dB
PL13 15.00 dB
SFO2 500.1320005 MHz

F2 - Processing parameters
SI 32768
SF 125.7577890 MHz
WDW EM
SSB 0
LB 1.00 Hz
GB 0
PC 1.40

